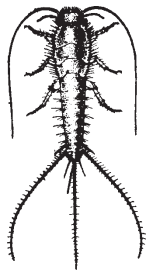
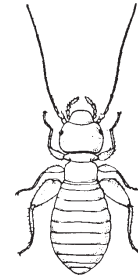
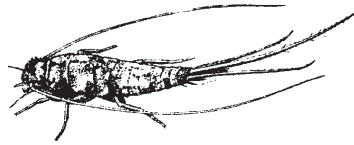


SILVERFISH, FIREBRATS, AND BOOKLICE



Actual Size =
1/2"



Actual Size =
1/8"

GENERAL INFORMATION

Silverfish and firebrats (Order Thysanura) are narrow, tapering, wingless, scaly, and gray insects. They are one-third to one-half inches long and have a pair of long antennae and three prominent filaments that protrude from the tail end. They can run very fast.

Booklice (Order Psocoptera) are also called Cereal Lice and Cereal Psocid. They are minute soft bodied, flattened insects that have a jerky manner of moving. Those found inside buildings are wingless and light to dark in color. They are not harmful, but become annoying when in large numbers. They do not bite people, or carry disease.

HABITS & DAMAGE

These insects prefer warm, damp, and dark places. They have a simple development without a larval stage. Silverfish are very hardy and live for long periods without feeding. The food of silverfish and firebrats consists mostly of vegetable matter, especially that having a high starch or sugar content, or where glue or paste is present. Under favorable conditions, they become very destructive, feeding on sizing in paper, bookbindings, and wall paper. Fabrics of plant origin are attacked in varying degrees. Starched cloth, linen, and rayon may be seriously damaged. Lisle and cotton fabrics are attacked to a lesser degree. Clean fabrics of wool and animal origin are usually avoided.

The food of booklice appears to be mostly microscopic molds. They may damage bookbindings and other starchy materials.

CONTROL

To prevent breeding of these pests, dry out warm, damp, secluded locations that foster their development. Regular airing out and sunning of stored blankets and clothing is helpful. Store only clean and non-starched

materials.

* * * * *

This information is provided to help homeowners with their pest problems. Insecticides may be purchased at nurseries, hardware, farm supply, and pet stores. If additional help is needed, contact with a licensed pest control operator is suggested.

No endorsement of trade names or products is intended nor is criticism implied of similar products not mentioned.

PRECAUTIONS

1. Handle insecticides with care and follow instructions on the label.
2. Do not use around open flame or exposed foods, and always clean food preparation areas after the use of pesticides.
3. Store out of reach of children and pets, preferably in locked cabinets.
4. Never keep pesticides in anything other than the original container.
5. Never reuse the pesticide container to store any other materials.
6. Dispose of all empty containers by placing them in the trash can for removal to the local disposal area.



ORANGE COUNTY VECTOR CONTROL DISTRICT
13001 Garden Grove Boulevard, Garden Grove, CA 92843
(714) 971-2421 • (949) 654-2421

Please Visit Our Web Site www.ocvcd.org